

Getting Started with Fannie Mae Connect

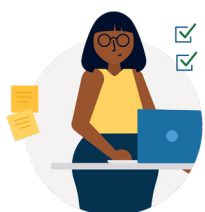


Fannie Mae Connect™ is your source for the reporting and analytics you need. Providing the data you want, when you want it, is what we're all about.



How do I get login credentials?

Contact your company's Fannie Mae corporate administrator. They can grant you access to the Fannie Mae Connect application. You'll set up your password in Fannie Mae's Technology Manager platform.



Who is my corporate administrator?

Log in to [Technology Manager](#) and select "Who are my administrators" from your dashboard or contact our Technology Support Center at 1-800-2Fannie (Option 1) to get the contact info for your Fannie Mae corporate administrator.



Who is my report administrator?

Your report administrator is listed in your user profile within the Fannie Mae Connect application.



How do I find a report?

Don't see what you need? Type the report name right into the search box. The reports you use most often will begin to appear right on your Fannie Mae Connect homepage.



I see a report I want. How do I get access?

Click the Request Access link located next to the report category. Your request will be sent to your administrators.

Talk to your corporate administrator to get started today. Be sure to visit the Help Center in Fannie Mae Connect for FAQs, help and training, and more.