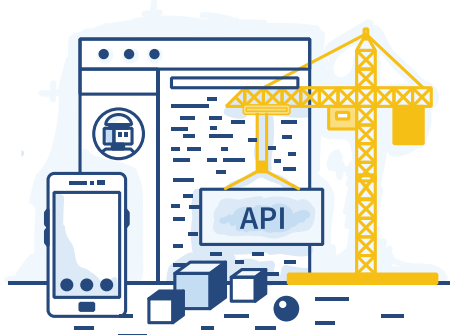


Servicing Released Premium Pricing API



The Servicing Released Premium (SRP) Pricing API gives servicers a breakdown of servicing released premiums based on supplied loan data and rate sheets. Previously, they could only get this information by logging into the Servicing Marketplace. This API acts as a resource for the validation of SRP pricing.



Key Features

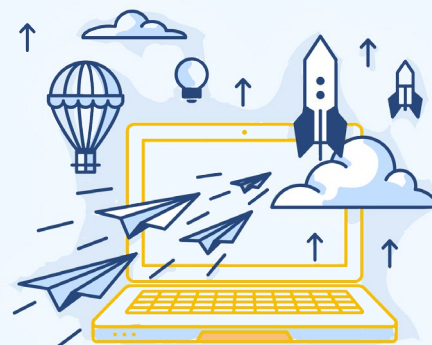
- Promotes transparency in SRP pricing to the servicers
- Automates the retrieval of results based on the provided SRP rate sheets and loan data scenarios
- Reduces the risk of conflicting SRP pricing data

Benefits

- **Automation** – Provides SRP pricing data to servicers, instead of requiring them to manually retrieve it from the Servicing Marketplace
- **Efficiency** – Servicer workflow is streamlined due to routine data retrieval

When would I use Servicing Released Premium Pricing API?

The Servicing Released Premium Pricing API offers servicers an on-demand, comprehensive view of up-to-date servicing released premium pricing.



Getting started? Need help?

Contact Customer Support at SMP_support@fanniemae.com.

Get all the details on getting started with our **Quick Start Guide**.

Need more support? **Contact us** to get your questions answered and to help ensure your implementation of the API is successful.