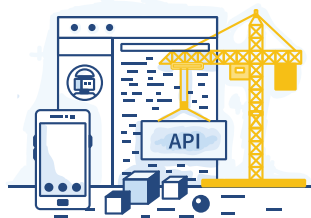


Servicing Released Purchased Loan Data API



The Servicing Released Purchased Loan Data API allows servicers to access loan data as soon as the next business day following a purchase by Fannie Mae.

Currently, servicers have to wait for sellers to send loan data for onboarding and reconciliation. Through this single API call, servicers gain faster access to complete data in a single Mortgage Industry Standards Maintenance Organization (MISMO) format.



Benefits

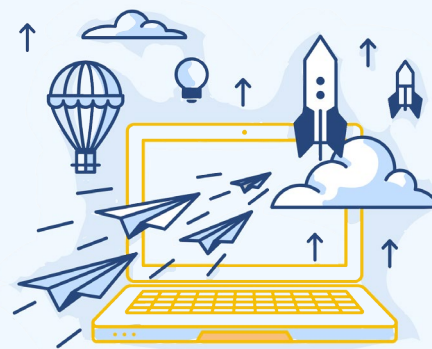
- **Streamlined workflows** – Servicers can now use their internal systems to quickly access and onboard purchased loan data
- **Increased accuracy** – the risk of human error and conflicting loan information reconciliation is greatly reduced
- **Efficiency** – Direct access to purchased loan data speeds up the loan-onboarding process; up-to-date information is extracted from just one source

When would I use Servicing Released Purchased Loan Data API?

The Servicing Released Purchased Loan Data API offers Servicing Marketplace servicers direct access to data on purchased loans for which they are named as the servicer.

Key Features

- Access to purchased loan data as recent as the prior business day
- Data provided in a single MIMSO format
- Eliminates wait time by getting data straight from Servicing Marketplace



Getting started? Need help?

Contact Customer Support at SMP_support@fanniemae.com.

Get all the details on getting started with our **Quick Start Guide**.

Need more support? **Contact us** to get your questions answered and to help ensure your implementation of the API is successful.